

Risk Management Mentor Program

Program Disclaimer

► Modules

1. Risk Management Fundamentals
2. Enterprise Risk Management
3. Applications
4. Healthcare Providers
5. Clinical and Patient Safety
6. Legal and Regulatory
7. Claims and Litigation
8. Risk Financing

► Topics

- Web links
 - Primary sources
 - Templates
 - Questions
 - Responses



Module 1

Risk Management Fundamentals

Risk Management Program

► Objectives

Identify key elements of the risk management program

Understand essential risk management processes

Understand the role of the risk management professional

Identify strategic principles of the risk management plan

▶ Key program elements



► Key program elements

A written plan describing the:

- Program's purpose
- Guiding principles
- Goals & objectives
- Scope & functions
- Administrative & committee structure
- Monitoring & continuous improvement



► Program goals

Enhance culture of safety initiatives



Improve patient safety



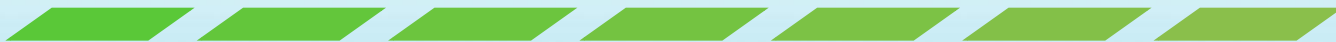
Improve staff safety



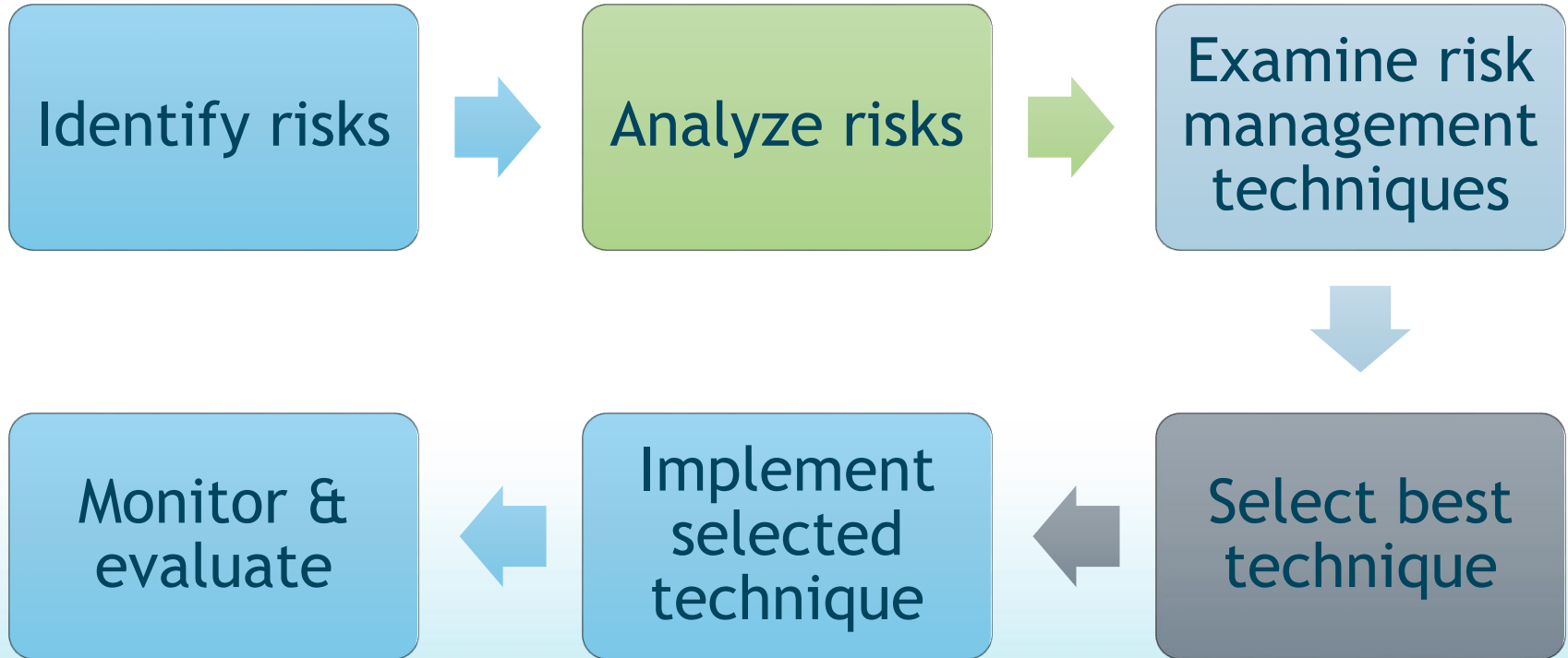
Mitigate risk exposure



Comply with regulatory agencies



► Decision-making process



► Identify risks – Formal sources

Closed claims data

Device reports and tracking logs

Employee satisfaction surveys

Event reports

Proactive risk assessments

Sentinel event data

Security reports

Health record review using occurrence screening and trigger tools

Safety culture surveys

► Identify risks – Informal sources

Health record requests

Patient complaints & grievances

Accreditation & licensure survey reports

Personal inspections & walkrounds

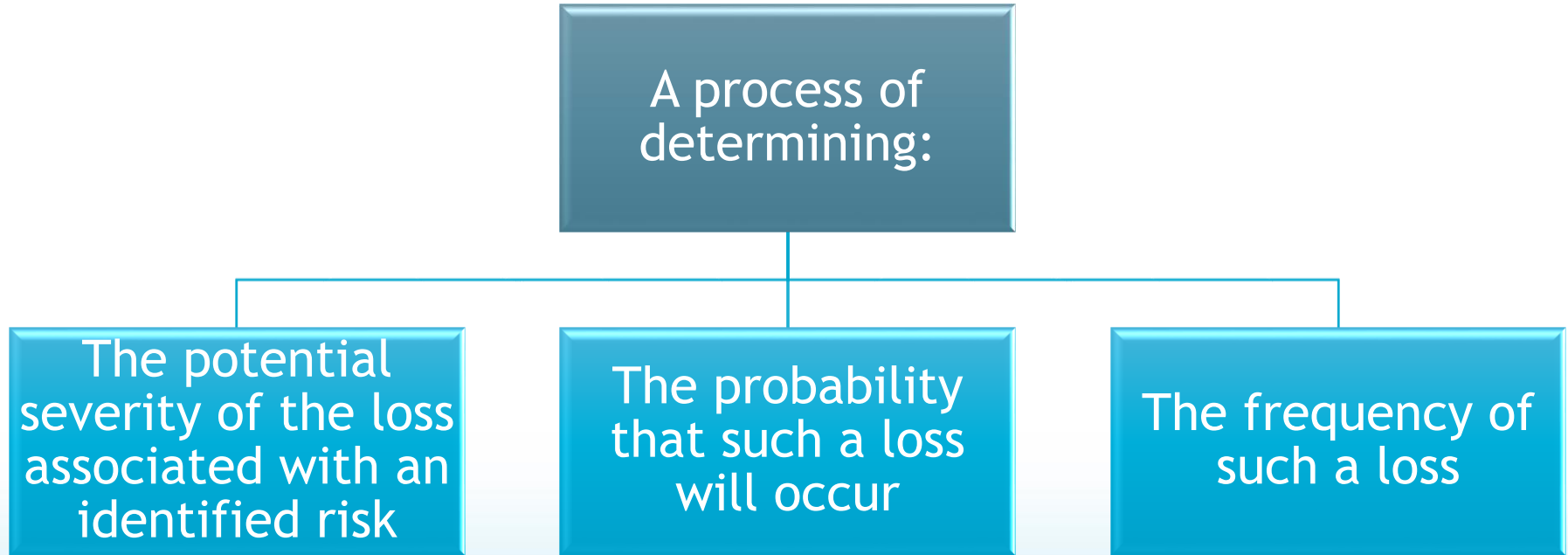
Informal discussions with staff

Hotline calls

Medical device recall & hazard notices

Committee minutes

► Analyze risks



► Examine risk management techniques

Risk avoidance - Eliminating risks

Loss prevention

- Education
- Culture of safety
- Leadership walkrounds
- Risk assessments
- Performance improvement participation
- Current laws, standards, and regulations

► Examine risk management techniques



Risk management techniques

- Loss reduction
 - Adverse events
 - Disclosure
 - Fire alarm and sprinkler systems
 - Medical devices
 - Safe patient care

► Examine risk management techniques



► Monitor and evaluate for effectiveness

Effective-
ness
measured
by:

Financial data

Claims activity

Repeated self-assessments

Event reports

Culture of patient safety surveys

Patient satisfaction data

Patient safety & performance improvement
committee reports

▶ Sample risk management program

▶ Scenario

- ▶ Memorial Hospital is a community facility located 100 miles from the nearest tertiary care center and level three nursery. Services include emergency department (ED), surgery, med-surg, and obstetrics (OB).
- ▶ Due to recent budget cuts, staffing has been minimized through attrition and restructuring.
- ▶ Many nursing staff members have worked at the hospital for 25 years or more with newer nursing staff added over the past 3 years.
- ▶ Patient volumes are steady from September through May; however, they double to triple during June, July, and August.

▶ Sample risk management program

▶ Risk identification

- ▶ Significant nursing shortages have been observed in the ED, OB, and med-surg during June, July, and August.
 - *Due to location, agency staffing is not available.*
- ▶ During the months of May through August, a number of adverse patient events and near misses have been reported (formal sources).
- ▶ A few adverse events have resulted in claims and litigation that have affected the hospital's financial status (formal sources).
- ▶ Patient and staff complaints have been gathered along with informal discussions with frontline staff (informal sources).

▶ Sample risk management program

▶ Risk analysis

▶ Adverse events

- ED: misdiagnosis of cardiac issues, fractures, and behavioral health
- OB: postpartum hemorrhage, shoulder dystocia, and infant respiratory issues
- Med-Surg: early recognition of sepsis, stroke, and medication errors

▶ Near miss events

- ED: wrong patient identification and medication issues
- OB: improper scheduling of elective inductions and newborn identification
- Med-Surg: lack of response to decompensating patients

▶ Severity of each event, probability of occurrence, and frequency of occurrence

► Sample risk management program

Risk techniques

- Loss prevention
 - Risk assessments
 - Leadership walkrounds
 - Culture of safety survey

Program development

- Teamwork building
- Cross-training

▶ Sample risk management program

Monitoring and
evaluation

- Self-assessments
- Event reports
- Patient satisfaction surveys
- Culture of safety surveys
- Patient safety and performance improvement committee reports

► Risk management professional's characteristics

- ✓ Maintain excellent interpersonal skills
- ✓ Be objective and discreet
- ✓ Identify potential losses
- ✓ Minimize losses
- ✓ Apply risk financing techniques
- ✓ Implement and monitor policies & procedures

► Risk management professional's responsibilities



► Risk management professional's role



Manage event reporting, investigation, and analysis

Coordinate disclosure

Investigate complaints and grievances

Oversee device recalls, tracking, and reporting

► Risk management professional's role



Oversee safety and security

Educate leadership and staff

Participate in strategic committees

Develop an organization-wide program

► Risk management plan

Mission and vision

Clinical risk and patient safety

Safety of:

Visitors

Third-party

Volunteer

Employee

Assets

<https://www2a.cdc.gov/cdcup/library/templates/default.htm>

<http://www.tnpcaeducation.org/resource/library/clinical/Quality%20and%20Risk%20Mgmt%20Plan%20sample.pdf>

► Risk management plan

Plan elements include the following:

Purpose

Guiding principles

Leadership

Goals & objectives

Scope & functions

Administrative & committee structure

Monitoring & continuous improvement

Confidentiality

Governing board approval

► Guiding principles

Risk management and patient safety

Just culture

Practices and protocols

Claims management

Complaint resolution

Confidentiality

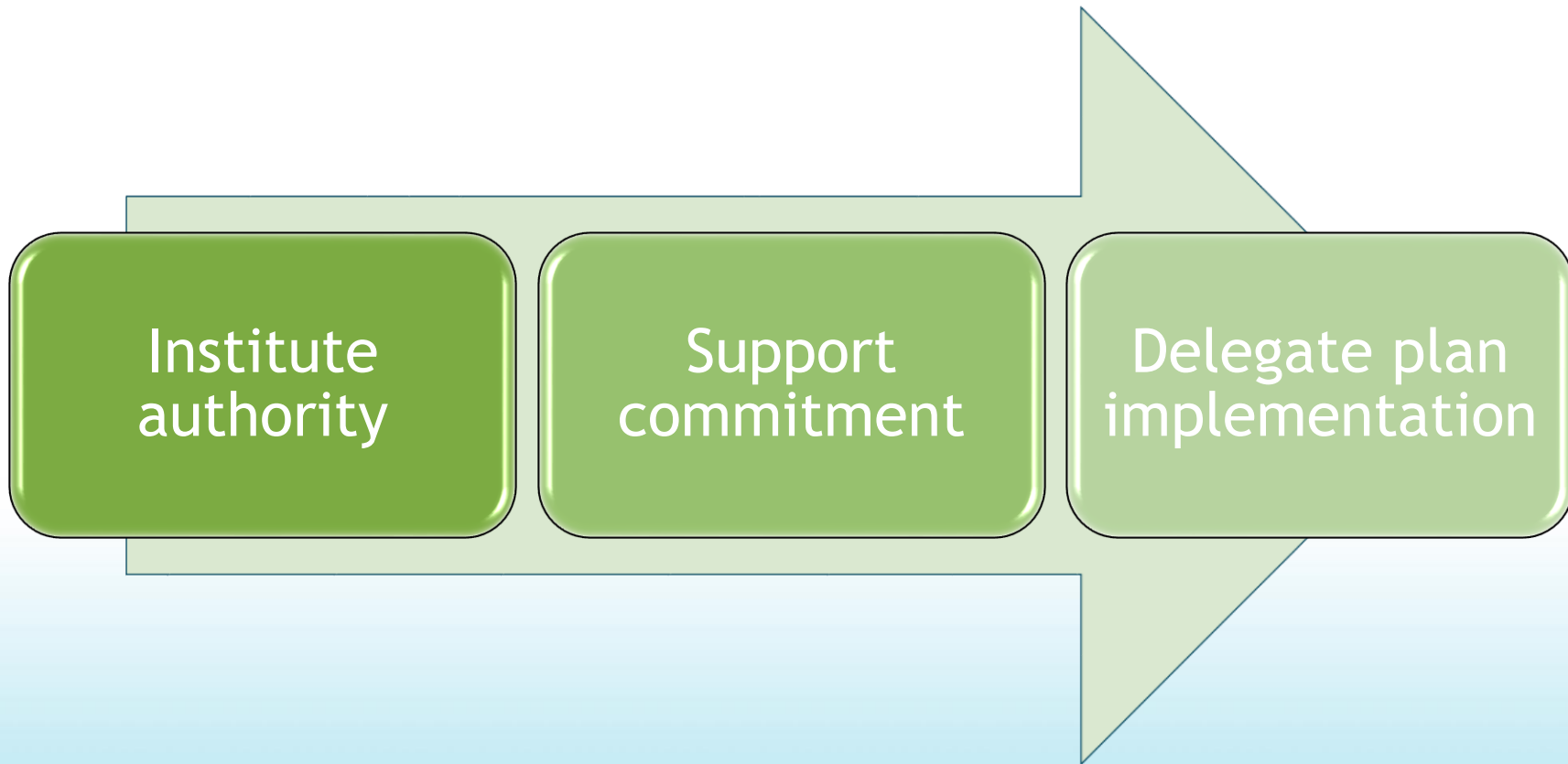
Management of adverse events

Event investigation

Proactive analysis

Trend analysis

► Governing body leadership



► Goals and objectives



► Scope and functions

Administration

Corporate
compliance

Environmental
safety and
security

Finance

Human
resources

Infection
control

Information
technology

Nursing

Patient
satisfaction

Products and
materials
management

Quality and
process
improvement

► Scope and functions

Claims
management

Confidentiality

Culture of
safety

Data
collection,
analysis, and
trending

Environment of
care

Event oversight

Loss prevention

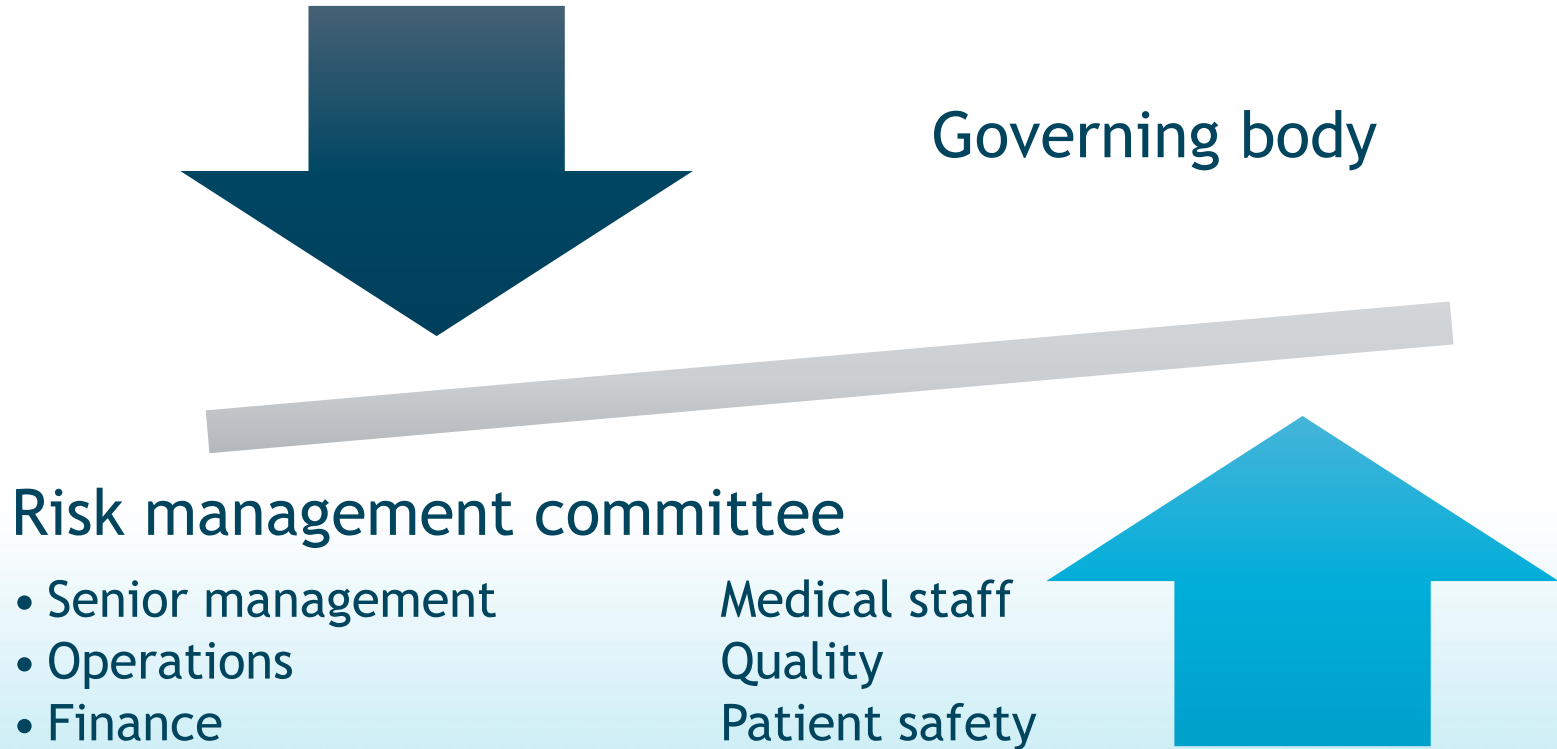
Complaints

Patient safety
initiatives

Physician and
staff education

Risk
assessments

► Administrative and committee structure



► Risk management plan



- Analysis of data
- Assessment of the program
- Reporting to the board



- Confidential and privileged documents
- Governing board approval

► Resources

- American Society for Healthcare Risk Management. (2014). *CPHRM Exam Preparation Guide*. 3rd ed. Chicago, IL: ASHRM.
- American Society for Healthcare Risk Management. Overview of the healthcare risk management profession. Retrieved from http://www.ashrm.org/about/HRM_overview.dhtml
- Carroll, R. (Ed.). (2010). *Risk Management Handbook for Healthcare Organizations*. 6th ed. Hoboken, NJ: Jossey-Bass Publishers.
- ECRI Institute. (2009). Developing a risk management program.
- ECRI Institute. (2014). Patient safety, risk, and quality. Retrieved from <https://www.ecri.org/components/HRC/Pages/RiskQual4.aspx?tab=1>
- ECRI Institute. (2016). Sample job description: Clinical risk manager.
- ECRI Institute. (2010). Sample risk management plan for a community health center - patient safety and risk management program. Retrieved from <https://bphc.hrsa.gov/ftca/riskmanagement/riskmgmtplan.pdf>
- ECRI Institute. (2014). Sample risk management plan for a patient safety and risk management program.
- ECRI Institute. (2014). The role of the healthcare risk manager: A primer.

► Quiz question

In applying the basis for having a risk management plan, what value can it add to a healthcare organization?



▶ Response

- ▶ Organizational value gleaned from a comprehensive risk management plan includes:
 - ▶ Staff and leadership focus on common goals
 - ▶ Integration in processes throughout the organization
 - ▶ Open communication regarding risk management activities
 - ▶ Risk management that penetrates all aspects of the organization (i.e., enterprise risk management)
 - ▶ Staff and leadership accountability in protecting and promoting the organization

► Disclaimer

The information contained herein and presented by the speaker is based on sources believed to be accurate at the time they were referenced. The speaker has made a reasonable effort to ensure the accuracy of the information presented; however, no warranty or representation is made as to such accuracy. The speaker is not engaged in rendering legal or other professional services. If legal advice or other expert legal assistance is required, the services of an attorney or other competent legal professional should be sought.